

## STC Upgrade tutorial

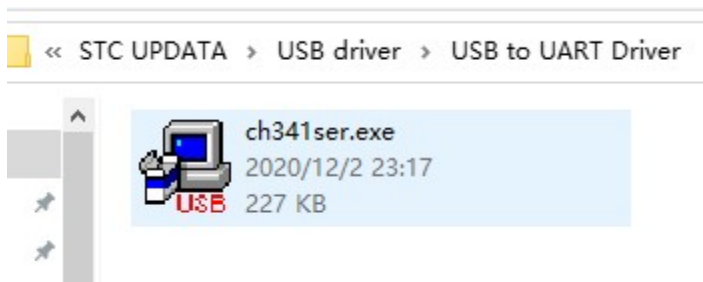
First step:

Install driver

1. Connect the programmer to the computer, as shown in the figure (the color of the housing is not fixed):



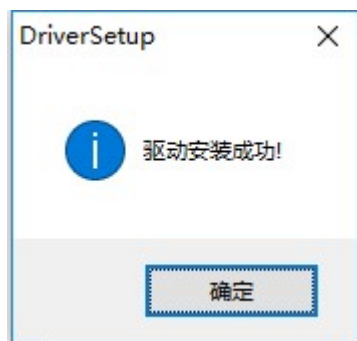
2. Run ch341ser in the driver folder:



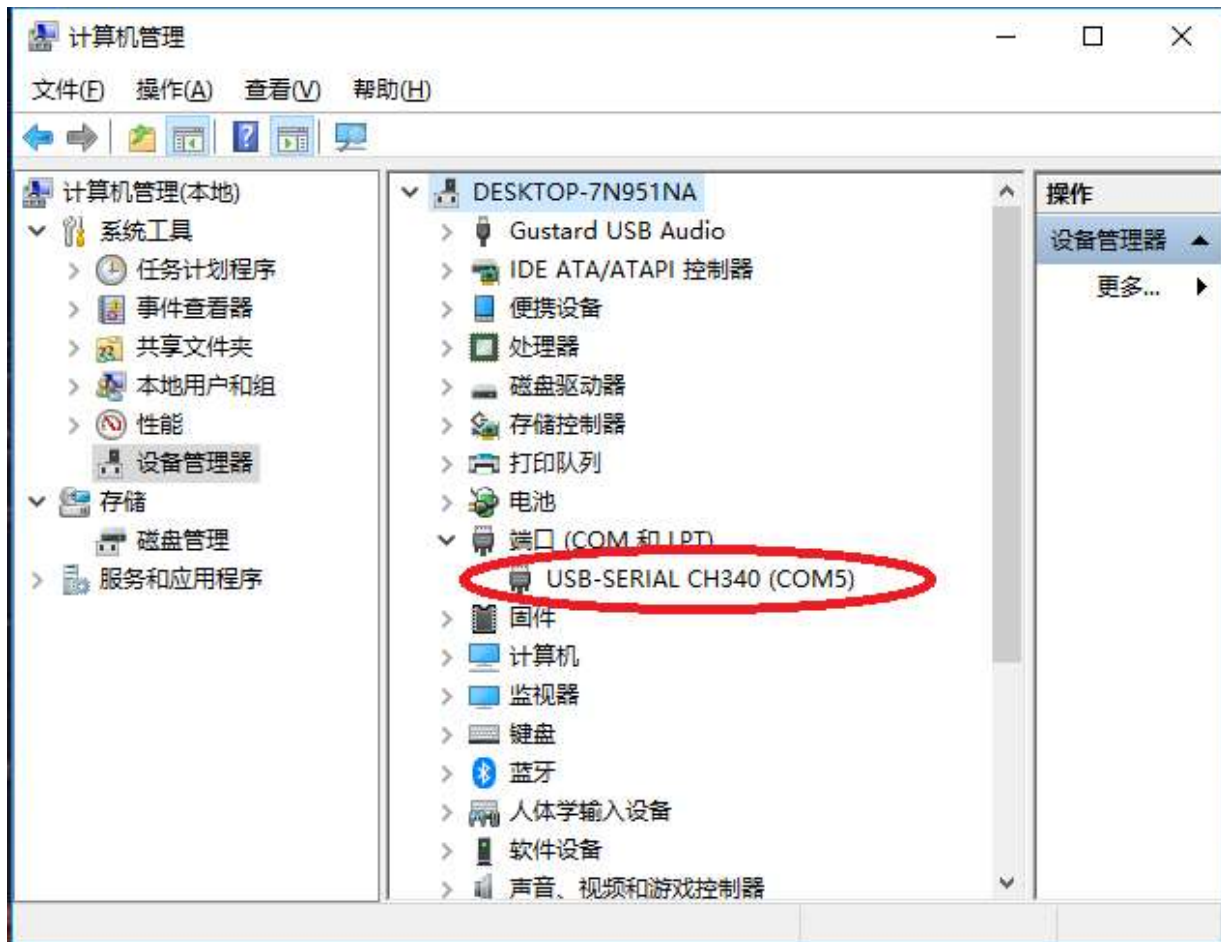
3. Click install



4. Successful installation



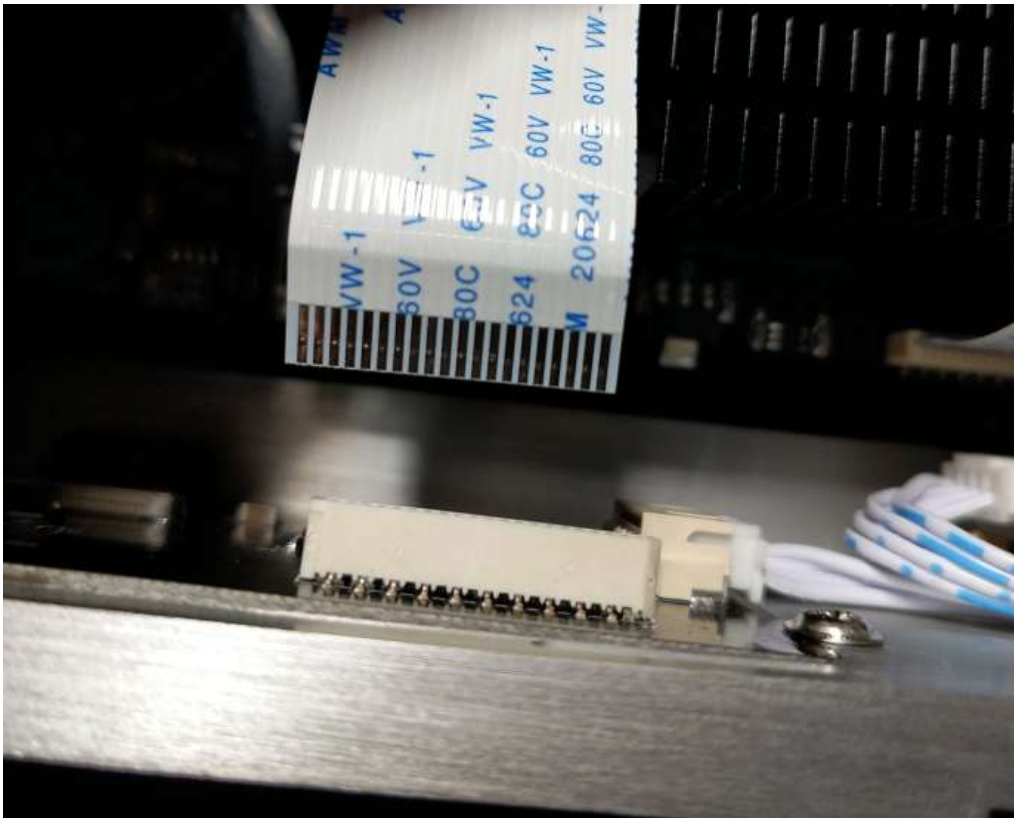
5. Check whether the programmer already exists on the computer, please remember the number after "COM", the number is random, not necessarily the same as the picture.



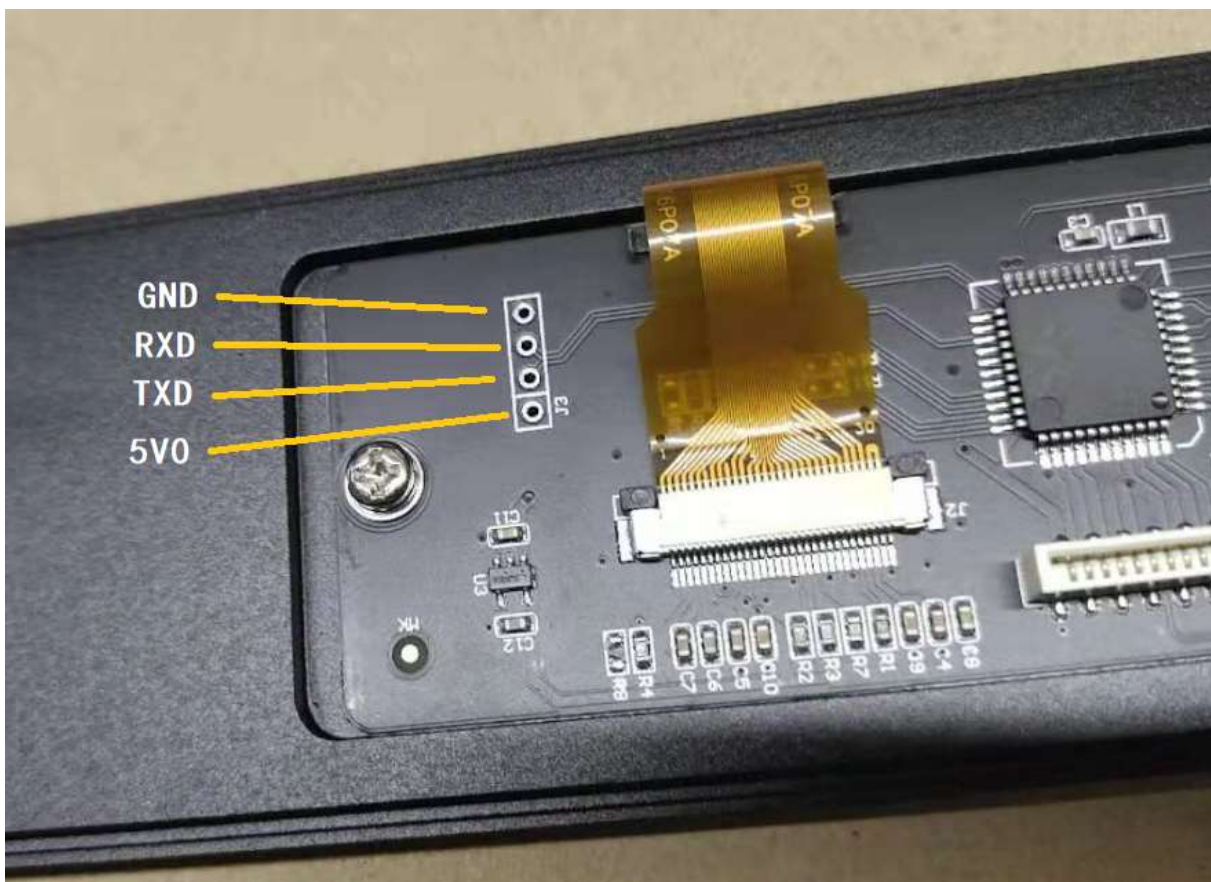
The second step:

Programmer connection A18 display board

1. First unplug the display board cable

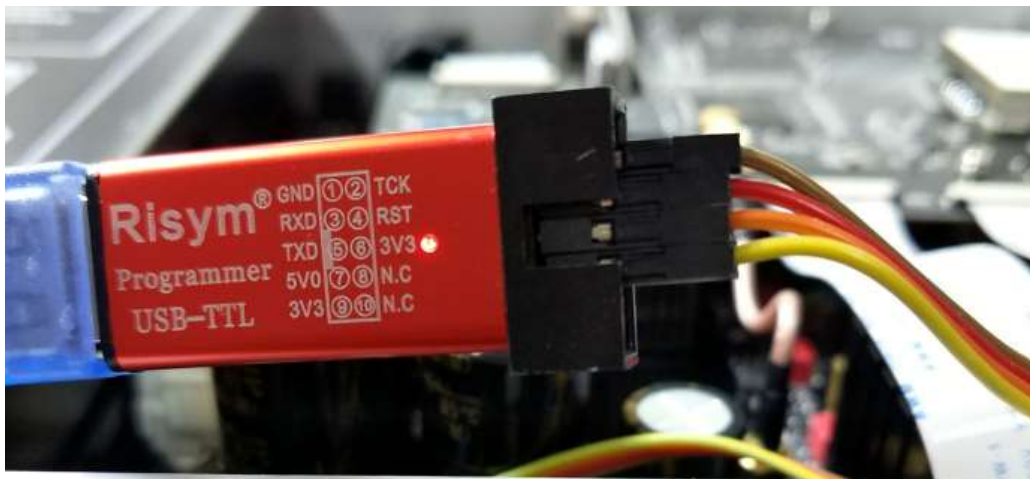
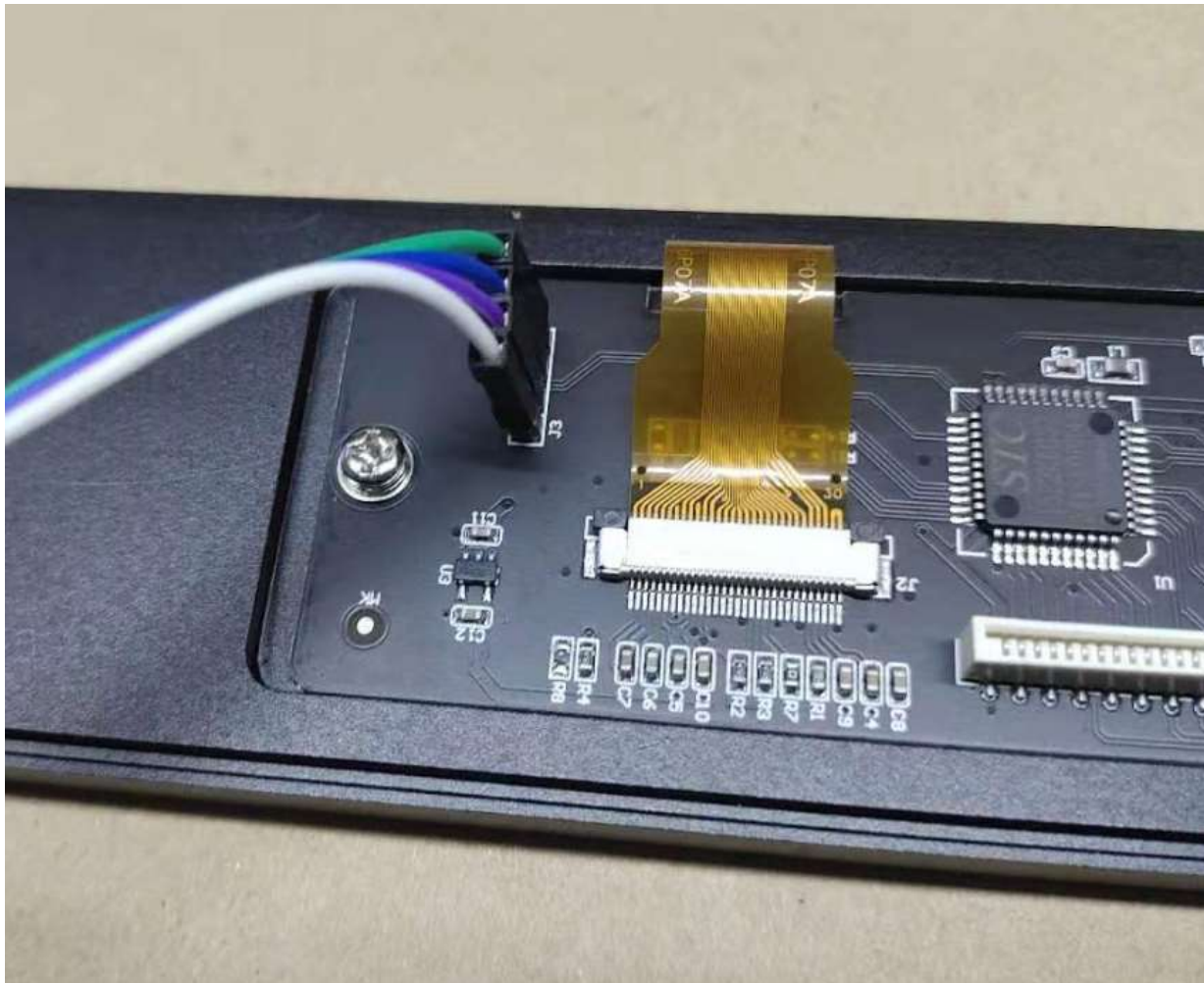


2. Connect the programmer and display board:



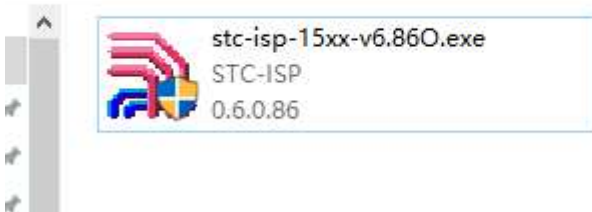
After connecting, the programmer is also connected to the computer USB. The screen can be run.



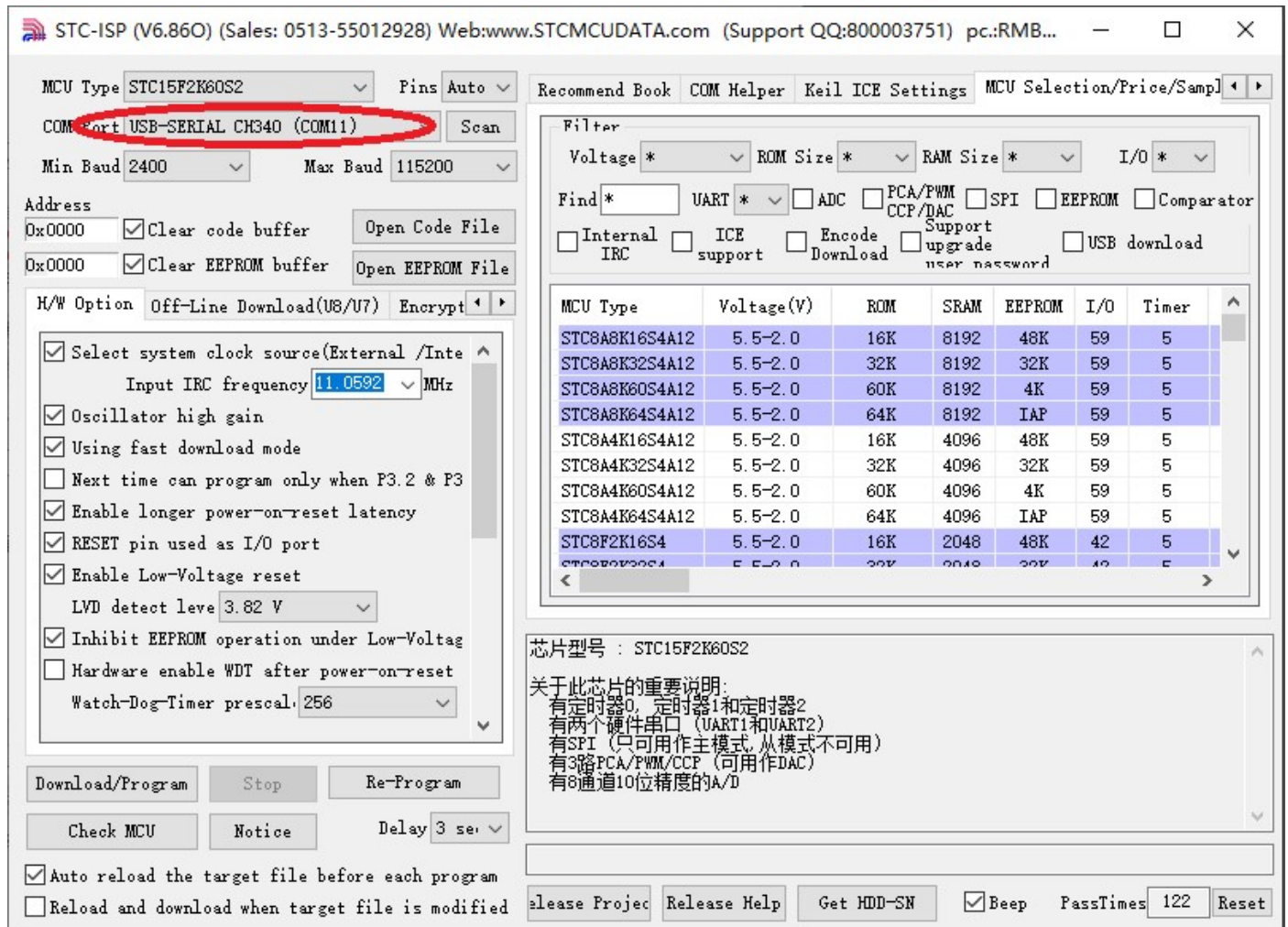


3. Run the upgrade program:

« STC UPDATA » Upgrade program » stc-isp-15xx-v6.86O



Close the notification of the software, and confirm any prompt points. COM number select the number displayed when the driver is just installed.



- Click on the Check MCU option, the program will automatically detect the correct MCU model, and confirm with any prompt.

STC-ISP (V6.86O) (Sales: 0513-55012928) Web:www.STCMCUDATA.com (Support QQ:800003751) pc::RMB...

MCU Type:  Pins:  Recommend Book COM Helper Keil ICE Settings MCU Selection/Price/Samp

COM Port:  Scan

Min Baud:  Max Baud:

Address:  ☒ Clear code buffer   
 ☒ Clear EEPROM buffer

H/W Option:  Encrypt

☒ Select system clock source(External /Inte  
Input IRC frequency:  MHz

☒ Oscillator high gain

☒ Using fast download mode

☐ Next time can program only when P3.2 & P3

☒ Enable longer power-on-reset latency

☒ RESET pin used as I/O port

☒ Enable Low-Voltage reset

LVD detect leve:

☒ Inhibit EEPROM operation under Low-Voltage

☐ Hardware enable WDT after power-on-reset

Watch-Dog-Timer prescal:

Delay:

☒ Auto reload the target file before each program

☐ Reload and download when target file is modified

Filter: Voltage \* ROM Size \* RAM Size \* I/O \*

Find \* UART \* ☐ ADC ☐ PCA/PWM CCP/DAC ☐ SPI ☐ EEPROM ☐ Comparator

☐ Internal IRC ☐ ICE support ☐ Encode Download ☐ Support upgrade user password ☐ USB download

MCU Type	Voltage(V)	ROM	SRAM	EEPROM	I/O	Timer
STC8A8K16S4A12	5.5-2.0	16K	8192	48K	59	5
STC8A8K32S4A12	5.5-2.0	32K	8192	32K	59	5
STC8A8K60S4A12	5.5-2.0	60K	8192	4K	59	5
STC8A8K64S4A12	5.5-2.0	64K	8192	IAP	59	5
STC8A4K16S4A12	5.5-2.0	16K	4096	48K	59	5
STC8A4K32S4A12	5.5-2.0	32K	4096	32K	59	5
STC8A4K60S4A12	5.5-2.0	60K	4096	4K	59	5
STC8A4K64S4A12	5.5-2.0	64K	4096	IAP	59	5
STC8F2K16S4	5.5-2.0	16K	2048	48K	42	5
STC8F2K32S4	5.5-2.0	32K	2048	32K	42	5

. Reference voltage: 1233 mV (Range: 1150~1320mV)  
. Testing time: 2020-4-7

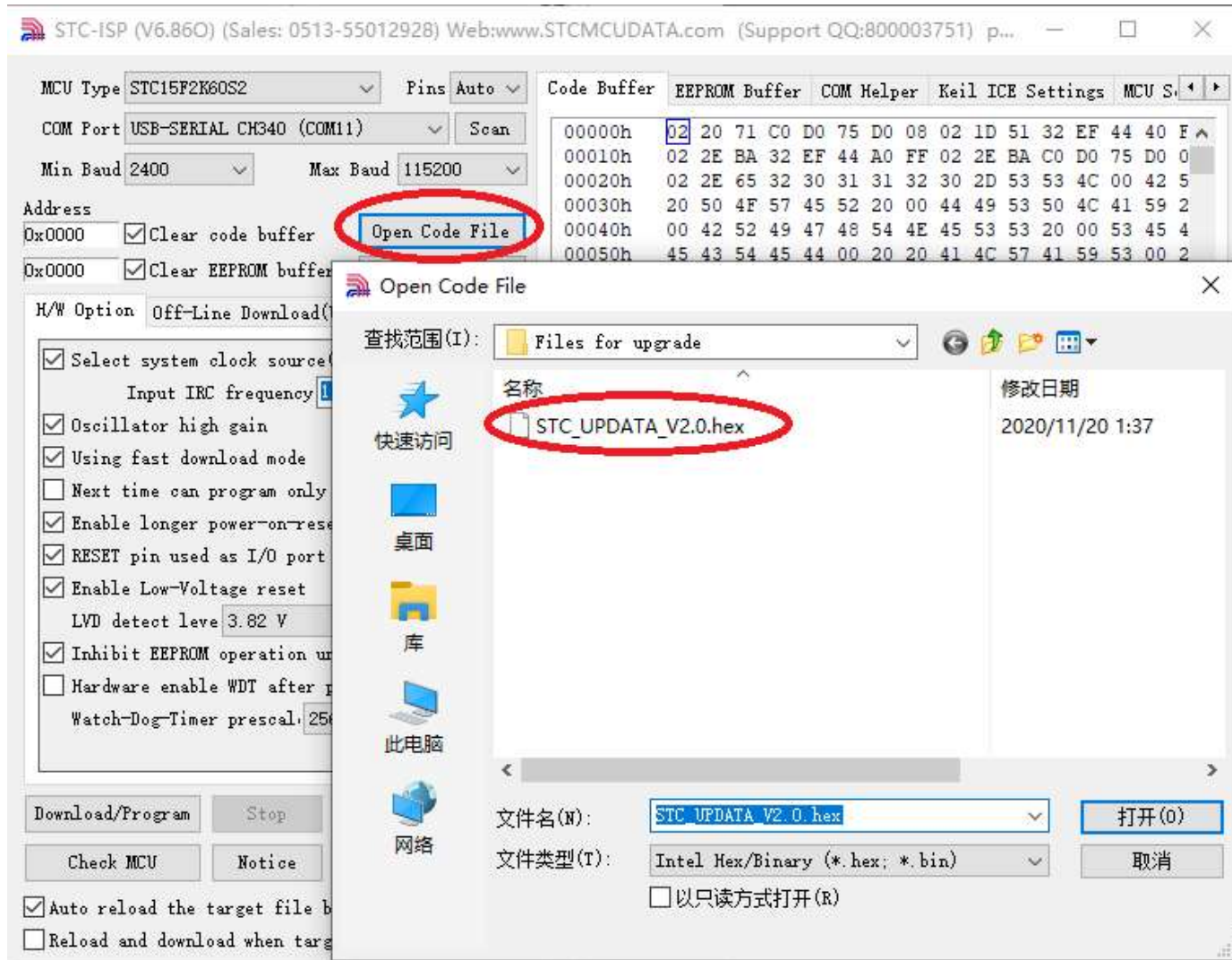
. MCU type: STC15F2K60S2  
F/W version: 7.2.5S

Complete !(2020-12-04 13:54:00)

☒ Beep PassTimes:

- Open the upgrade program file, STC\_UPDATA\_V2.0.

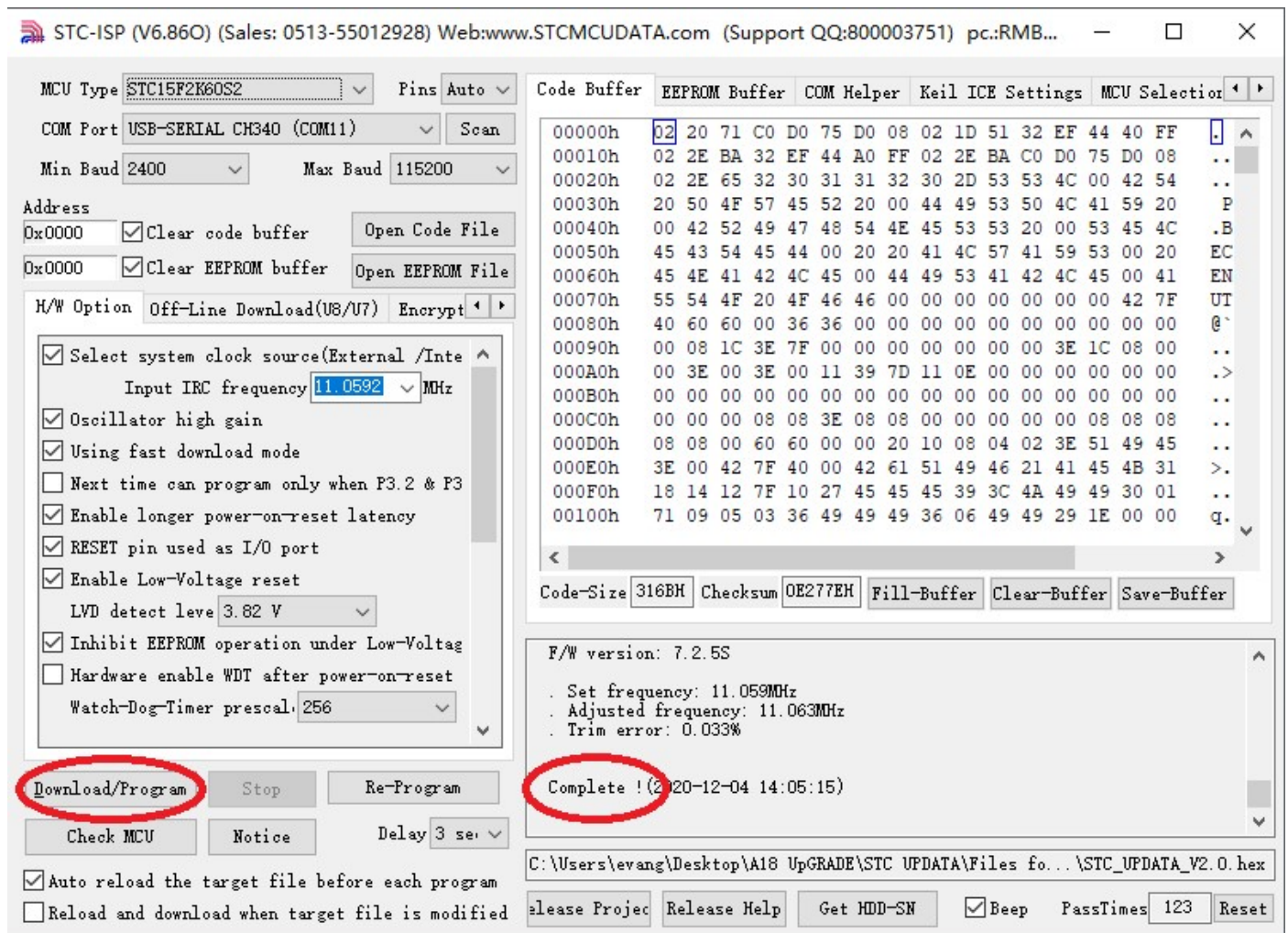




6. Click "Download/Program" to start programming, there is a progress bar indicating. The word "Complete" will be



displayed after the download is complete



7. Unplug the programmer after successful operation.  
And plug the A18 motherboard cable back into the display board.